



CONTENTS

ANNUAL MEETING	2	OTHER SOCIETIES	6
CHAPTERS	4	TECHNICAL STANDARDS	7
INSIDE HFES	5	NEWS	7

Human Factors Represented at Congressional Exhibition on Science @ Work

By Wendy A. Rogers, HFES President-Elect

On June 22, the Coalition for National Science Funding hosted an exhibition at the Rayburn House Office Building in Washington, D.C. (<http://www.thefederationonline.org/CNSF2004.html>). The purpose of the event was to showcase research projects funded by the National Science Foundation (NSF).

The exhibition was attended by 370 people, including members of Congress and their staff, NSF directors, other government officials, and the press. HFES was represented at the exhibition as a result of our affiliation with the Federation of Behavioral, Psychological, and Cognitive Sciences. As a member of the coalition, the Federation was invited to host a booth at the exhibition and invited me to present my NSF-funded research.

By way of background, let me introduce more fully these different organizations. The Coalition for National Science Funding (<http://www.cnsfweb.org/>) is an alliance of more than 100 organizations with the common goal of supporting and enhancing scientific research in general and particularly increasing the country's investment in research and education programs. Members of the coalition include organizations such as the American Association for the Advancement of Science, the American Psychological Association, and, as mentioned, the Federation. (Note that HFES is not a member of the coalition, but membership is only \$80 per year, so we are planning to join.)

The Federation of Behavioral, Psychological, and Cognitive Sciences (<http://www.thefederationonline.org>) is also a coalition with a more focused mission: to support the interests of scientists who conduct research in the areas of behavioral, psychological, and cognitive sciences. Its focus is on legislative and regulatory advocacy, education, and the communication of information to scientists. HFES is a member of the Federation, and as part of our outreach plan, we will be coordinating more activities with it in the future. I will detail these plans in a future *HFES Bulletin* article.

Now, to make sure you are following the story, here is a recap:

FBPCS, which is a member of CNSF, invited HFES, which is a member of FBPCS, to participate in an NSF research exhibit in D.C. Is that as easy to follow as ABC?

I was accompanied by one of my graduate students, Anne McLaughlin, and HFES President Betty Sanders also joined us there. I would like to take you through our day. Our goal was to spread the word about human factors and ergonomics to members of Congress and their staff. Thanks to the coordination and support of Federation Executive Director Barb Wanchisen and Public Policy Analyst Jill Egeth, I believe we were successful.

In the morning, we went to the Federation office for a strategy session with Jill. She had scheduled what are colloquially referred to as "Hill visits" for us, meetings with congressional staff members on Capitol Hill. Jill had prepared materials about the Federation and about the coalition, and we had prepared materials about HF/E research. We learned that it is important to (a) schedule meetings with staffers in advance; (b) plan a lot of extra time because these extremely busy people are often behind schedule; (c) prepare very brief, one-page overviews to use for discussion and to leave with the staffers; and (d) have a focused message for the meeting. In our case, our message was to invite members of Congress and their staffs to the evening exhibition and to tell them about the HF/E field.

According to Jill, members of Congress are always willing to meet with their constituents, so we visited the offices of Congressman John Lewis from Georgia and Congresswoman Sheila Jackson Lee from Texas. During these visits we discussed the importance of science funding to industries and universities in their districts.

We then attended a meeting at the office of Congressman Vernon Ehlers, who is a member of the House Committee on Science. We met with his legislative assistant, Ellen Burns, who is

continued on next page



Left to right: Wendy Rogers (Georgia Tech), Congressman Vernon Ehlers (R-MD), Anne McLaughlin (Georgia Tech).

Human Factors Represented at Congressional Exhibition on Science @ Work

(continued from page 1)

responsible for drafting text to illustrate the contributions of science to society. Although she was not familiar with our discipline, she was very interested and eager to learn. At the end of the meeting, she said, "Well, now I know something about human factors and ergonomics." We were most gratified when she also said that she would save our materials to use in future drafts relating to science policy.

The exhibition itself was held from 5:30 to 7:30 p.m. in the Rayburn House Office Building. There were 33 exhibits about various aspects of science – all research funded by NSF. Anne and I had created a hands-on demonstration for our booth. Our topic was "The Aware Home: Sustaining the Quality of Life for an Aging Population." This is an interdisciplinary research program with the Georgia Tech College of Computing and the School of Psychology focusing on developing ubiquitous computer applications to support older adults in maintaining their independence in their own homes (<http://www.awarehome.gatech.edu>). We had a continuous slideshow presentation about the Aware Home (strategically positioned where people waited in line for drinks), posters and handouts about our research, and a demonstration of a "technology coach" to support the use of medical devices by older adults.

Our efforts were rewarded by the impressive list of visitors who learned about the value of HF/E science. The visitors included

- Arden Bement, acting director of NSF
- Joseph Bordogna, deputy director of NSF
- Wanda Ward, acting director for Social, Behavioral, and Economic Sciences at NSF
- Jack Marburger, director of the White House Office of Science and Technology Policy (and science adviser to the President)
- Congressman Ralph Regula (R-OH), member of the Appropriations Subcommittee on Labor/HHS/Education and a long-time advocate for elders
- Congressman Vernon Ehlers (R-MI), member of the House Committee on Science
- Joye Purser, legislative assistant for Congressman Lincoln Davis (D-TN), also a member of the House Committee on Science

While Anne and I were hosting our booth, Betty had the opportunity to visit other booths and talk to a wide variety of scientists about HFES. She made some very valuable connections at this event. One in particular is with the American Institute of Physics, which demonstrated a media tool to educate the public about new scientific discoveries. Betty is investigating the cost of using the AIP's system to air information about HF/E.

All in all, our visit to Washington was very valuable and a lot of fun. We are very grateful to Barb and Jill at the Federation for the financial and organizational support that enabled us to participate in this event. Next time you are in Washington, D.C., be sure to contact them – you might like to visit their offices, and they could coordinate Hill visits for you as well. Such activities support one of the HFES strategic objectives of advancing awareness of human factors and ergonomics. ☒



Wendy Rogers (Georgia Tech) with Dr. Jack Marburger, director of the White House Office of Science and Technology Policy.

ANNUAL MEETING

NEM "Birds of a Feather" Meeting

Have you been hearing a lot about National Ergonomics Month (NEM) and wondering what you can do to get the word out about human factors and ergonomics? Need help with idea generation or tool identification for your personal, student chapter, local chapter, or other group's NEM action plan? Want to exchange ideas about NEM-related activities? Then join us at the "NEM: What Can I Do? 'Birds of a Feather'" meeting, tentatively scheduled for Wednesday, September 22, from 12:00 to 1:30 p.m. at the Sheraton New Orleans (room to be determined). The session will be organized as a brown bag (bring your own lunch) open discussion moderated by NEM Editor Karen R. Young. If interested, please RSVP to kryoung@choroid.com by September 3, as space may be limited. Hope to see you there!

Call for Speakers: 99 Seconds

By Melroy D'Souza

A unique new session, "99 Seconds," is set to premiere at the 2004 HFES Annual Meeting. The new session features an open-microphone forum that aims to provide annual meeting attendees



Bulletin

Volume 47, Number 8 August 2004

The *HFES Bulletin* (ISSN 1527-3660) is published monthly by the Human Factors and Ergonomics Society, 1124 Montana Ave., Suite B, Santa Monica, CA 90403 USA, <http://hfes.org>. Address inquiries and address changes to HFES, P.O. Box 1369, Santa Monica, CA 90406-1369 USA, 310/394-1811, fax 310/394-2410, <http://hfes.org>.

Copyright © 2004 by the Human Factors and Ergonomics Society. Printed in the USA. The *HFES Bulletin* is provided to members of the Society (\$10 of annual dues covers member subscriptions); nonmembers may subscribe for \$40/year. Periodicals postage paid at Santa Monica, CA, and additional mailing offices. USPS #018-206.

a chance to discuss their work in a relatively quick and lighthearted format. Speakers who sign up as presenters for this session will get exactly 99 seconds to talk about their work.

The session is designed so that presenting authors can generate interest in sessions in which they are participating. Also, attendees who have not submitted a paper can also use this forum to do a high-level presentation of their current work. Additionally, students can talk about their research and stimulate interest in those areas.

The session is different from other informal gatherings such as technical group meetings or poster sessions in that it allows participants to present their work and other human factors/ergonomics-related opinions to a wide audience, which in turn benefits from hearing about to a broad range of subjects.

Prizes of software will be presented to the two best speakers (as voted by the audience). "99 Seconds" will be held on Tuesday, September 21, from 1:30 to 3:00 p.m. To sign up, send an e-mail to Melroy D'Souza at melroyds@microsoft.com with your name and the title of your presentation before September 15, 2004. Or just come to the session and present your work.

New HPM-TG Premieres at 48th Annual Meeting

By Wayne Gray, HPM-TG Chair

The Human Performance Modeling Technical Group has been approved, and next year, at the 2005 HFES Annual Meeting, the TG will organize sessions emphasizing research advances and applications in human performance modeling.

At this year's annual meeting, the new TG is represented by two events. The first is its inaugural business meeting on Wednesday, September 22, at 5:30 p.m. (room name will appear in the Program). The business meeting will include a brief introduction about the breadth of human performance modeling. Don B. Chaffin (University of Michigan) will discuss physical models included in software such as JACK, Safework, and HUMOSIM. These digital human models and virtual dynamic manikins represent human anthropometry, movement capabilities, and sometimes strength. Richard W. Pew (BBN) will provide an overview of the control theory roots of human performance modeling and its modern manifestations. Wayne Gray (Rensselaer Polytechnic Institute) will discuss approaches based on cognitive architectures that seek to model the control of cognition.

The second event will be presented on Thursday, September 23, at 10:30 a.m. This symposium on cognitive human performance modeling, submitted to and accepted by Special Sessions Chair Ronald L. Boring, brings together three excellent examples of cognitive human performance modeling. Michael D. Byrne will discuss his recent work on modeling a closed-loop, pilot-displays aircraft system designed to evaluate the impact of the addition of a synthetic vision system to a commercial airliner cockpit. Chris Forsythe will discuss why computational cognitive models can and should replace such existing technologies as data mining and expert systems. Finally, Frank E. Ritter will present

work that models the effect of stress, caffeine, and anxiety on human performance.

CEDM-TG's Largest Program Ever!

By Dave Kaber & Catherine Burns, Program Chairs

This year's Cognitive Engineering and Decision Making Technical Group program includes 10 lecture sessions, 5 panels, and 3 symposia. This is the largest number of sessions the TG has sponsored, and it reflects tremendous growth in interest in cognitive engineering research.

The lecture sessions will address topics such as cognitive work analysis, cognitive modeling, data fusion and information overload, human factors in command and control, distributed cognition, and expertise and errors.

The panels cover a wide range of "hot topics," including augmented cognition, cognitive engineering in software systems development, human-robot interaction, and intelligence analysis.

The symposia address current issues with relevance to all of us, including homeland defense, cognitive engineering in weather forecasting, and new approaches to cognitive work analysis. The CEDM-TG was also fortunate to be able to cosponsor several sessions with the Medical Systems and Rehabilitation TG, the Systems Development TG, and General Sessions.

We hope the program is exciting and interesting for a broad audience. Thanks to all of you who submitted proposals for consideration this year. We look forward to seeing you in New Orleans. Please attend the CEDM-TG business meeting as part of the conference to discuss the tremendous growth in our membership and the future of the TG.

The Future of E-Commerce

By Marc Resnick, Program Chair

If you are interested in seeing what e-commerce will look like in the future, attend the Internet Technical Group's second session, "The Future of E-Commerce."

The first presentation in this session will demonstrate an intelligent recommendation system. This system, designed for a Web-based department store, predicts the products that customers may want by modeling the customer's profile, product functional relationships, and browsing history. It presents these recommendations in a user-friendly interface and preserves the customer's privacy preferences. The end result is a shopping assistant with a fashion sense.

Two other presentations portray new design ideas for finding what you are looking for using navigation. The first presents product comparison data in a color-coded, tabular format that makes comparison fast and easy. The second tests competing menu-navigation structures to determine which one is the easiest to traverse.

continued on next page

The fourth paper in the session presents a model of user satisfaction, frustration, and user-Web site compatibility. This closes the loop on Web design. For a design to be truly effective, it has to achieve the site's performance goals. This model presents an effective way to test whether the goals have been reached using a simulation model that also suggests where effort should be expended to improve site design.

"The Future of E-Commerce" session will be held on Thursday, September 23, at 10:30 a.m.

Human Factors' Role in Health Care in 2020

By *Carla J. Alvarado & Caroline Cao, Panel Cochairs*

What role will human factors professionals play in health care in 2020? Health systems throughout the world face a number of common pressures related to demography, epidemiology, science and technology developments, and medical demand. In particular, developments in technology do not just provide health care with new possibilities for human factors engineering, medical interventions, and therapies; they also produce changes in our understanding of sickness and health, the possibilities and needs for managing systems, for innovation, and for standardization; and political and economic relationships. Health care providers must not only cope with these technological developments but also ensure their successful implementation and acceptance. The uncertainties and expectations linked to these innovations present major challenges within the research and health care systems, such as policies for managing scarcity of resources and changes in the relative frequency of diseases because of factors including aging and a mobile global population.

Come participate with this panel of health care and human factors experts in discussing the role that human factors will play in health care in 2020. The Medical Systems and Rehabilitation Technical Group panel "The Role of Human Factors in Health Care in 2020" will take place on Tuesday, September 21, from 10:30 a.m. to 12:00 noon.

Product Design TG Announcements

By *Brad Allen, Chair*

The Consumer Products Technical Group's proposed name change has been approved. The new name is Product Design Technical Group (PDTG). PDTG is working to revitalize its communications with members through the PDTG newsletter and Web site, as well as two new officers, Nicole Proulx (newsletter editor) and Andrew Morton (Webmaster). Another aspect of the revitalization effort will be a member survey focusing on desired features and content for the newsletter and Web site.

At this year's annual meeting, PDTG will have three sessions – two on Tuesday and one on Thursday. The Thursday afternoon (3:30 to 5:00 p.m.) session will feature the presentation of the 3rd Annual User-Centered Product Design Award. Submissions are judged on the basis of both the design and the methods used to specify and achieve the design. Emphasis is placed on innovative and user-centered approaches to product design.

The winner is presented a personalized award and \$500, after which the award recipient will give a talk about the winning research and design effort.

Annual meeting participants are invited to attend the award session and support this highlight of PDTG's program. Immediately following the special session, a reception will be held at the PDTG business meeting. Come for the award session, and then stay and help plan for the future of the Product Design Technical Group. ☒

CHAPTERS

MIT Student Chapter Journal Club

By *Laura Major & Roland Weibel, Copresidents*

As one of its many summer activities, the HFES MIT Student Chapter is hosting a Journal Club. The goal of the club is to augment formal academic activities at MIT and foster in-depth discussion about current research in human factors and engineering. The Journal Club meets four times over the summer on the MIT campus, with two sessions devoted to each topic of discussion. Four graduate students from MIT's International Center for Air Transportation and the Man-Vehicle Laboratory have volunteered to choose an article for one of the sessions and lead the discussion.

One of the topics to be covered is fatigue and its effects on operator performance. The first paper, from *Human Factors*, focuses on the aviation domain, but other domains are likely to be analyzed as the discussion continues. The next topic the Journal Club will discuss is public perception of technological risk. The first paper outlines the factors related to public perception of technological risk, and the second is likely to focus on the application of risk issues in a specific field.

The chapter has invited MIT affiliates, other Boston-area universities, and local HFES industry members to attend. The event will also be publicized within the greater MIT graduate community to provide an opportunity for those outside the HF/E field to learn more about human factors.

Other MIT HFES summer events include an Industry Seminar Series, lab tours, and social outings. More information on the Journal Club and other MIT chapter activities can be found at <http://web.mit.edu/~hfes/www/>. ☒

Executive Council Midyear Meeting Report

The HFES Executive Council met at the Sheraton New Orleans Hotel on April 15–17 for its midyear meeting. The following is a summary of the discussions and actions taken at that meeting.

Strategic Planning

April 15 was set aside for continued review of the HFES Strategic Plan. Council members focused on updating and prioritizing the HFES Strategic Plan (now available at the HFES Web site: <http://www.hfes.org/About/stratplan.html>) and creating a specific action plan for the prioritized activities. The Council also discussed an upcoming collaborative outreach activity with the Federation of Behavioral, Psychological, and Cognitive Sciences, of which HFES is a member. Details about the activity will appear in a future issue of the *HFES Bulletin* and on the Web site. The final topic for the day was an exploration of ways in which the Society's operations might be improved through human factors analysis.

Awards

In future, HFES will consider nominating Honorary Fellows for International Ergonomics Association Fellow. Previously, only HFES Fellows were considered.

Budget

The 2004 budget was amended as follows:

Income

Membership	\$ 630,290
Membership Services	45,250
Communications/Pubs	435,250
Annual Meeting	190,250
HFES Institute	18,250
Miscellaneous	5,250
Total estimated income	\$1,324,540

Expenses

Member services	\$ 94,750
Publications	310,643
Administrative	628,841
HFES Institute	41,200
Committees, Officers	57,575
Annual Meeting	90,117
Interorganizational	12,586
Total estimated expenses	\$1,235,712
Estimated surplus	\$ 88,828

Chapters

Two new student chapters were approved: Ohio State University and San Jose State University.

Publications

Council approved the inclusion of the American Psychological Association's section 8.05, "Ethics of Scientific Publication" (see the *Publication Manual*, 5th ed., pages 348–355), in policies governing all HFES publications. Also included in those HFES author guidelines is Article III-Publications from the HFES Code of Ethics (see the *2004–2005 HFES Directory and Yearbook*, page 359).

Council endorsed the recommendation of Annual Reviews Chair Raymond S. Nickerson to appoint Robert C. Williges as the editor of the second edition. The first edition is now in development under Nickerson's editorship.

Technical Groups

The Human Performance Modeling Technical Group was approved. For a description of the TG, see pages 6–7 in the January 2004 *HFES Bulletin* (available at <http://www.hfes.org/news/Jan04Bulletin.pdf>). To join, complete the TG application form, which may be found at http://bfes.org/Escapes/TG_memb_app.pdf.

Council endorsed the recommendation of the Consumer Products Technical Group to change the name to Product Design Technical Group.

Get Ready for NEM 2004!

By Haydee M. Cuevas, Karen R. Young, & Ronald G. Shapiro

This October marks the second annual National Ergonomics Month (NEM). Recall that NEM's theme is "A Time for Teaching, Learning, Networking, Service, and Fun!" NEM is a special time to promote awareness among the general public of the significant and positive impact that human factors and ergonomics (HF/E) can have on people's everyday lives. This year's emphasis is on interacting with the media and expanding our school and community involvement.

The September timing of this year's annual meeting is perfect for NEM, as several activities have been planned for helping you generate great ideas to implement in October. Start off the week by attending a special NEM session on Monday, September 20, from 4:45 to 6:15 p.m., immediately preceding the Opening Gala Reception. HFES President-Elect Wendy Rogers will begin the session by sharing her ideas for NEM 2004. Next will be two presentations focusing on media outreach: Alan Hedge (Cornell University) with "Wise Words or Perplexing Prose: Strategies for Successful Media Interviews" and Eric Paulsen (from New Orleans CBS affiliate WWL-TV, Channel Four) with "How to Get the Most Out of the Media." Paulsen will offer advice on how HFES members can better reach out to the media, such as by writing articles and press releases or through interviews.

HFES President Betty Sanders and NEM Committee Cochair Haydee Cuevas will then present the awards for the NEM 2003 Best Action Plan Implementation and NEM 2004 Best Action Plan. These two contests are designed to encourage HFES Student Chapters to become more actively involved in promoting

continued on next page

HF/E in their local communities, thus targeting two principal NEM initiatives: community and student outreach. (Details about the NEM 2004 Best Action Plan Contest appeared in the April *HFES Bulletin*.)

Also targeting student outreach is a special career panel session, "Launching Your Career in HF/E: Guidelines for Soaring High in the Job Market," scheduled for Tuesday, September 21, from 3:30 to 5:00 p.m. Panelists include Ronald G. Shapiro (IBM), Anthony D. Andre (Interface Analysis Associates), Janet I. Creaser (HumanFIRST), Jeffrey D. English (PeopleSoft, Inc.), and Arnold M. Lund (Microsoft).

Take advantage of the various sessions and social opportunities at the meeting, such as the NEM "Birds of a Feather" gathering (see page 2), to exchange ideas and network with other HF/E professionals, and – above all – have fun!

To learn more about NEM and to help you prepare for the NEM activities planned at the HFES Annual Meeting, visit the NEM Web site (<http://hfesnem.org>). Developed by Jennifer Trich Kremer and Cindy Lu, the Web site provides information about the goals and purposes of NEM, suggestions regarding what you and your colleagues can do to promote NEM, and resources that are available to assist you. The Web site can also be used to help you develop and implement personal or group NEM action plans.

If you have any questions about NEM, contact Haydee M. Cuevas (ha651622@ucf.edu) or Ronald G. Shapiro (rshapiro@us.ibm.com).

HFES Europe Chapter Annual Conference

By Karel Brookhuis, Europe Chapter President

In 1982, a small but active group of human factors specialists founded a new HFES chapter, the Europe Chapter. The Europe Chapter was founded on a continent that had national and international organizations in this field but no direct bond to HFES.

Today, we have a growing membership of 92 members, a periodical (the chapter newsletter, once or twice a year), and a regularly distributed membership directory. We also conduct annual meetings with sometimes considerable attendance; these have developed into international conferences of notable reputation. The annual two- or three-day events in October-November, rotating through our European member countries, have proven highly successful and enjoyable. The impact of these conferences on organizations and individuals in the host countries is growing, not the least because we have published proceedings for each meeting since 1991.

Lingering fresh in our memory is the enjoyable 2003 conference we had in Lund, Sweden, hosted by the faculty of Design Sciences of the University of Lund. Participants attended most of the presentations and posters, all of a great interest and high quality.

We hope to match the success of last year's event at this year's Annual Meeting in Delft, "Human Factors in Design, Safety, and

Management," October 27–29, 2004, hosted by the Delft University of Technology. The local organizing team in Delft has met and is in the planning process.

As plans are finalized, we will post information at the conference Web site, <http://conference.hfes-europe.org>. Please join us in Delft.

Karel A. Brookhuis is a professor at the University of Groningen (Netherlands) in the Experimental Work Psychology program. He is also president of the HFES Europe Chapter.

Support the 2004 International Book Drive

By Raegan Hoeft, Chair

It's that time of year again! The HFES University of Central Florida Student Chapter is once again putting out a call for donations for the book drive. The HFES International Book Drive continues to thrive and assist universities and libraries around the globe. UCF has been responsible for collecting, cataloging, and mailing donated references since January 2000. Since that time, more than 3000 books, journals, and proceedings have been donated to institutions in more than 15 developing countries, including Brazil, Colombia, Ecuador, Indonesia, Lithuania, South Africa, Sri Lanka, and Thailand.

If you are interested in making a donation to support professionals and students around the world (please note that all donations are tax deductible), search your personal library and send your materials to Raegan Hoeft, 12424 Research Parkway, Suite 408, Orlando, FL 32826; 407/384-2090; hoeft2@hotmail.com.

We would like to thank Eldon Winston and the Georgia Tech Psychology Department, among others, for their generous donations last year. I would also like to personally thank Sherri Rehfeld and the rest of the UCF HFES Student Chapter for all their hard work with the 2003 Book Drive. We continue to be extremely pleased with this effort and look forward to making this year another success. ☒

OTHER SOCIETIES


HPEE Second Annual Meeting

The Society for Human Performance in Extreme Environments (HPEE) is holding its second annual meeting at the Sheraton New Orleans Hotel, September 18–19, 2004, immediately preceding the HFES 48th Annual Meeting.

HPEE is an interdisciplinary society for scientists, researchers, operational personnel, and other professionals with interest and expertise in the area of psychology and human performance in complex and high-stress environments. The society seeks to

remove the boundaries between scientific and applied disciplines, encourage empirical collaboration and discovery, and provide a forum for a diverse collection of professionals from spaceflight, military operations, underwater and high-altitude environments, extreme sports, and other settings in which humans are not naturally suited to endure.

The second annual meeting features papers on stress and human factors in spaceflight, accidents and neuropsychological performance during diving, augmented reality applications, human factors of future soldier systems, crew resource management in aviation, challenges of submarine operations, and combat medicine, among others. In addition, new and current members can join committees devoted to the HPEE journal, the HPEE Web site, and other topics related to the society's future.

We invite you to attend and learn more about HPEE. We are also offering a special reduced registration rate for current HFES members. For information on registration, room location, and a detailed meeting agenda, please visit <http://www.hpee.org> or contact society President Jason Kring (jkring@hpee.org) or Secretary John Barnett (jbarnett@hpee.org). 


TECHNICAL STANDARDS

Accommodating People with Cognitive Disabilities

By Daryle Gardner-Bonneau

Members of HFES are representing U.S. interests on the International Organization for Standardization Technical Committee 159, Working Group 1 (ISO/TC 159/WG1). The goal of this group is to develop a technical document that lays out ergonomics guidance for designing systems, services, and products that accommodate people with disabilities. Whereas WG1 members from other countries are focusing on developing guidance related to sensory and physical disabilities, the United States has been asked to chair the subgroup of the committee that has the challenging task of developing guidance related to cognitive disabilities.

Input is urgently needed about solid performance data related to cognitive disabilities that are ready for translation into technical guidance for design. A discussion session will be held at the 48th Annual Meeting, and we welcome anyone with expertise, interest, or experience in the area of cognitive disabilities and design to help us uncover relevant databases and sources of information from which technical standards may be developed. We will also discuss the substance and content of design guidance that can be generated in the near term.

Please join us for discussion and debate at the Sheraton New Orleans during the Annual Meeting. Please contact HFES Executive Director Lynn Strother at lynn@hfes.org for information on the date and location of the meeting. 


2005 MURI Grants

The Multidisciplinary University Research Initiative (MURI) program, which supports basic science and engineering research at institutions of higher education that is of critical importance to national defense, has announced grants for 2005. The Fiscal Year 2005 MURI competition is specifically geared toward 26 topics, including cross-disciplinary approach to the modeling, analysis, and control of wireless communications networks; training for the networked battlefield; computational modeling of adversary attitudes and behaviors; and many others.

Full Proposals are due *November 18*. The estimated total program funding is \$135 million. For more information, go to <http://www.fedgrants.gov/Applicants/USN/ONR/HQ/BAA%26%23032%3B04-021/Grant.html>.

Injury Undercount Higher Than Expected?

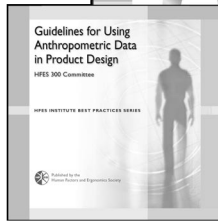
According to recent research conducted by a University of California at Davis epidemiologist and two colleagues, the federal Bureau of Labor Statistics (BLS) annual survey of occupational injuries and illnesses may be overlooking an alarming number of workplace injuries and illnesses.

In the March 19 issue of the *Cal-OSHA Reporter* (Vol. 31, No. 12), J. Paul Leigh, a professor of epidemiology and preventive medicine at UCR's School of Medicine, says that because of the lack of inclusion of government workers, farms with fewer than 11 employees, and the self-employed, plus underreporting by employers themselves, the BLS' undercount could be as high as 70%. In a research paper published in the January issue of the *Journal of Occupational and Environmental Medicine*, the researchers compiled previous research undercounts and built statistical models that estimated underreporting at between 28.2% and 84.2%. 

NEW!

Guidelines for Using Anthropometric Data in Product Design

By the HFES 300 Committee



Guidelines for Using Anthropometric Data in Product Design provides a path for the most efficient design of furniture, clothing, tools, or anything that must be used safely, comfortably, and efficiently by taking into account the dimensions of the human body. Anthropometry provides the human dimensional data, and the techniques to properly apply these data may vary in proportion to the complexity of the population to be accommodated.

This is the first document to present a global approach to anthropometry, extending from the use of averages and percentiles to methods appropriate for more complex designs, such as multivariate analysis. The unifying theme for all anthropometric methods is what is referred to as *case selection*. Case selection is the process of choosing realistic combinations of body dimensions that must be accommodated simultaneously for a design to fit its target audience.

Basic and advanced methodologies to properly apply anthropometric data are described, their advantages and disadvantages are explained, and illustrative examples are provided. Includes abundant resources and references.

ABBREVIATED TABLE OF CONTENTS

- Preface
- Introduction
- Statement of the Design Problem
- Defining the Target Population
- Anthropometric Databases
- Representing Body Size Variability Using Cases
- Transitioning Cases to Products
- Anthropometry in Design: Examples and Summary
 - Example 1: Keyboard Height for a Standing Workstation
 - Example 2: Fire Retardant Gloves
 - Example 3: Workstation Seating
- Appendix A. Glossary
- Appendix B. Bibliography of Related Publications

ISBN 0-945289-23-5 • 76 pages, 8.5 × 11"

Searchable PDF on CD-ROM \$50 HFES members, \$60 nonmembers
Paperbound. \$75 HFES members, \$85 nonmembers

Send orders and payment to:

HFES

P.O. Box 1369, Santa Monica, CA 90406-1369 USA
310/394-1811, fax 310/394-2410, store@hfes.org



Bulletin

Volume 47, Number 8 August 2004

Communications Director: Lois Smith
Student Views Editor: Melanie Diez
Assistant Editor: Jeremy Loudonback
Advertising: R. C. Bublitz & Associates,
800/485-5029; dick-rcb@juno.com

POSTMASTER:

Send address changes to the *HFES Bulletin*,
Human Factors and Ergonomics Society,
P.O. Box 1369, Santa Monica, CA 90406-1369 USA,
310/394-1811, fax 310/394-2410, http://hfes.org

General Information: info@hfes.org
Editorial/Advertising: lois@hfes.org
Placement Service: placement@hfes.org
Annual Meeting: lois@hfes.org

Opinions expressed in BULLETIN articles are those of the authors and should not be considered as expressions of official policy by the Human Factors and Ergonomics Society.

FLASH!

Calling All Exhibitors

Want to exhibit products or services at the HFES Annual Meeting in New Orleans? Go to <http://www.hfes.org/Meetings/2004exhibits.html> for more details.

Don't Miss Early Registration for the Annual Meeting

The deadline for early registration for the 2004 HFES Annual Meeting in New Orleans is August 27.



Human Factors and Ergonomics Society

P.O. Box 1369
Santa Monica, CA
90406-1369 USA

PERIODICALS
POSTAGE PAID
AT
SANTA MONICA, CA
AND ADDITIONAL
OFFICES